



ATLÁNTIDA

BY NOVAL PROPERTIES

# The resurgence of history

History tells us about the mythical city of Atlantis that, hidden by the ocean and oblivion, was once the place of origin of a supreme civilization, where culture, science and technology flourished. A city populated with riches and charms that planted in humanity the vision and hope of a perfect city.

A legend that resurfaces in time, to develop the most disruptive concept in the Punta Cana area.





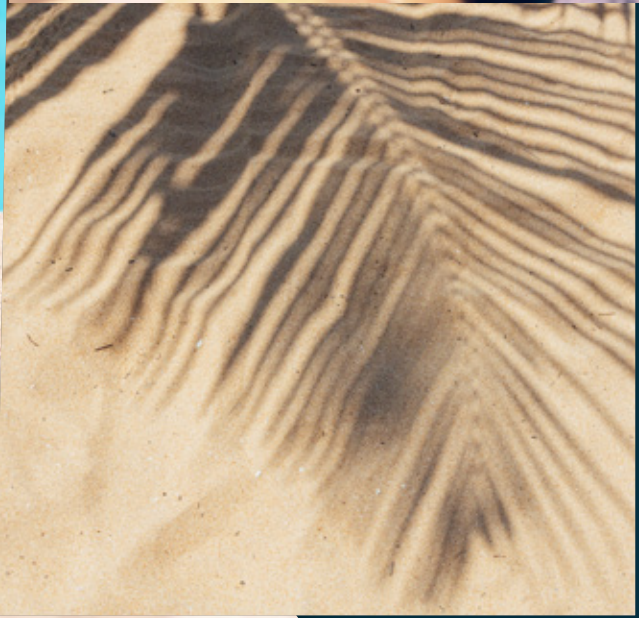
Punta Cana



## A tip of land where the entire Caribbean meets

Punta Cana is, without a doubt, one of the destinations in the Americas with the greatest development in recent years, thanks to an infrastructure that allows immediate interconnection to any destination in the world. It has its airport, tourist ports and all the facilities to live to the fullest. An active life within nature, near the best beaches in the Caribbean and extensive vegetation.

An area filled with a cosmopolitan culture, first-class restaurants, shopping centers and spaces where nightlife offers you a new experience at the end of each day.



# Live life in your own way



Atlántida has been conceived so that you can experience life to the maximum, exploring new paths, allowing you to enjoy the best of nature from a futuristic perspective.

Conquering new spaces and emotions, with social areas and swimming pools where your day-to-day life is transformed into a collection of special moments.

You will have for your enjoyment restaurants and various social areas to share with the family, as well as concentric pools, which will change the way you enjoy life.

---





Sport's zone



Shopping area



Green Zone



Beach Club



18 miles m<sup>2</sup> Pool



Ecological Trail



Spa



Restaurant's



Tennis



Gym





18 miles m2 Pool







Beach Club



Green Zone





Ecological Trail



# Exclusive areas



A structure that gives us independent environments, heights that do not break the horizon but rather redraw it, taking advantage of all its light to provide a perfect visual balance.

Atlántida is a space consisting of various worlds that are connected to each other, keeping moments and spaces memorable, giving you the experience of living in the future with legendary magic.







## Design with a view to the future

Thanks to the innovation in constructive solutions, Atlántida has clean and organic lines, which outline a first-class finish. With state-of-the-art materials projected throughout the entire structure, where the light and the greenery of nature are harmoniously integrated to offer a spectacular view.



It has a large shopping area and extraordinary amenities, including a gym, beach club and boutique hotel.



534 apartment



1, 2 y 3 bedroom's



18 miles m2 Pool



Security 24h



Terraces with panoramic views



Private parking



Elevator



Hotel boutique





# Project ubication

10  
MIN



Hospital IMG

5  
MIN



Shopping area

6  
MIN



Bávaro Beach

5  
MIN



DownTown  
Punta Cana

17  
MIN



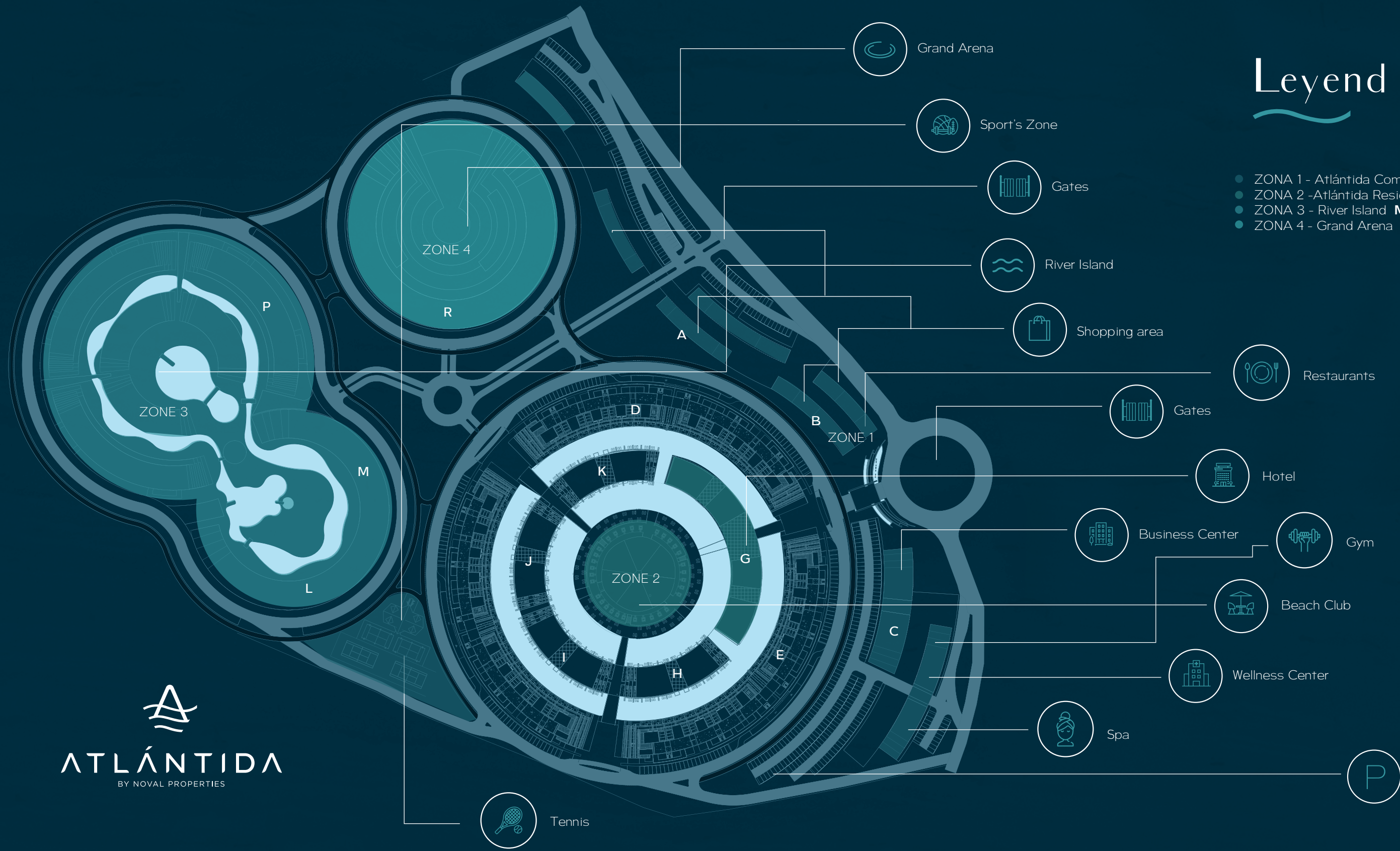
BlueMall

17  
MIN



Punta Cana  
International  
Airport





# Leyend

- ZONA 1 - Atlántida Comercial **A-B-C**
- ZONA 2 -Atlántida Residence **D-E-F-G-H-I-J-K**
- ZONA 3 - River Island **M-L-N-O-P-Q**
- ZONA 4 - Grand Arena **R**

Grand Arena

Sport's Zone

Gates

River Island

Shopping area

Restaurants

Gates

Hotel

Business Center

Gym

Beach Club

Wellness Center

Spa

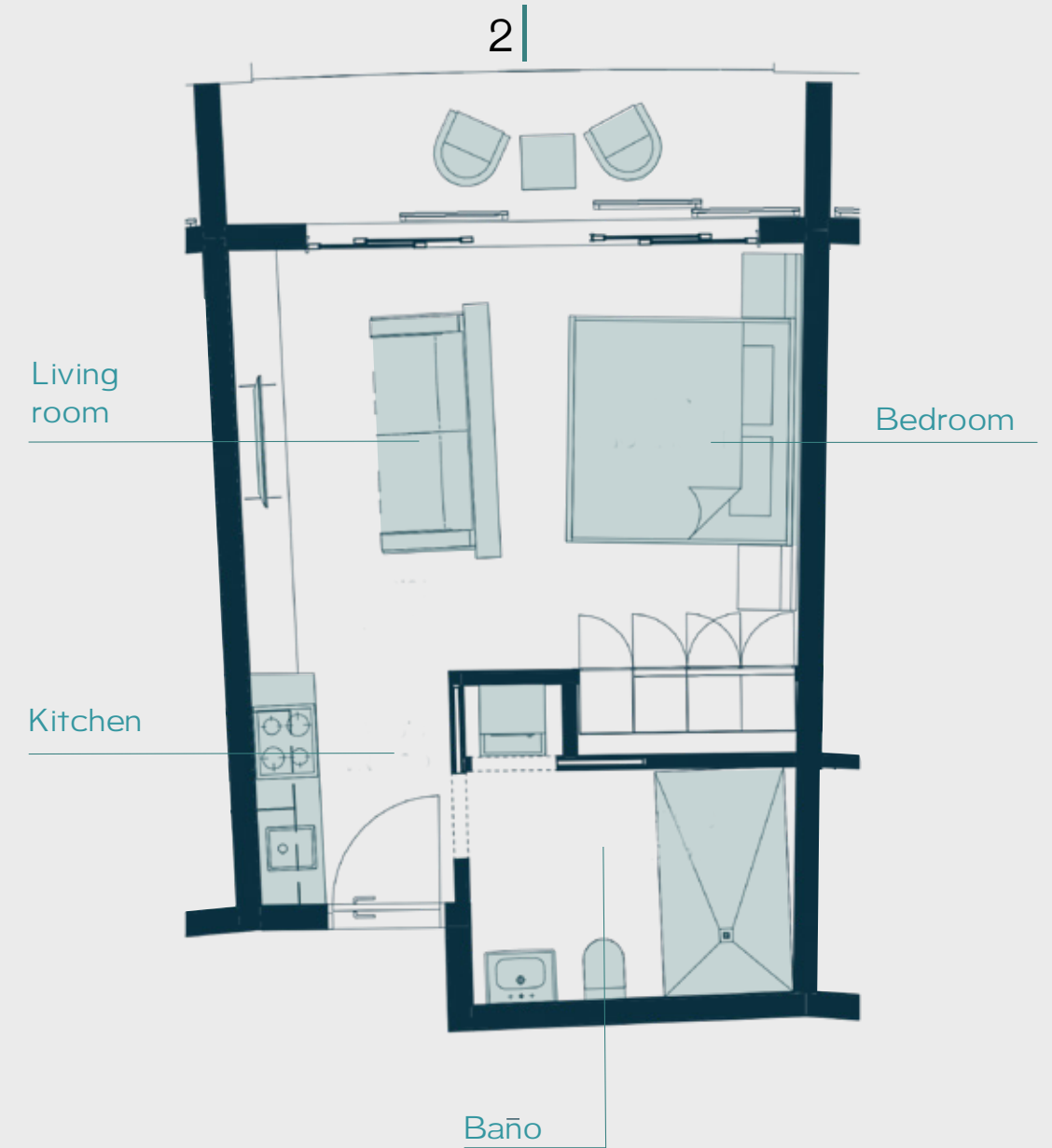
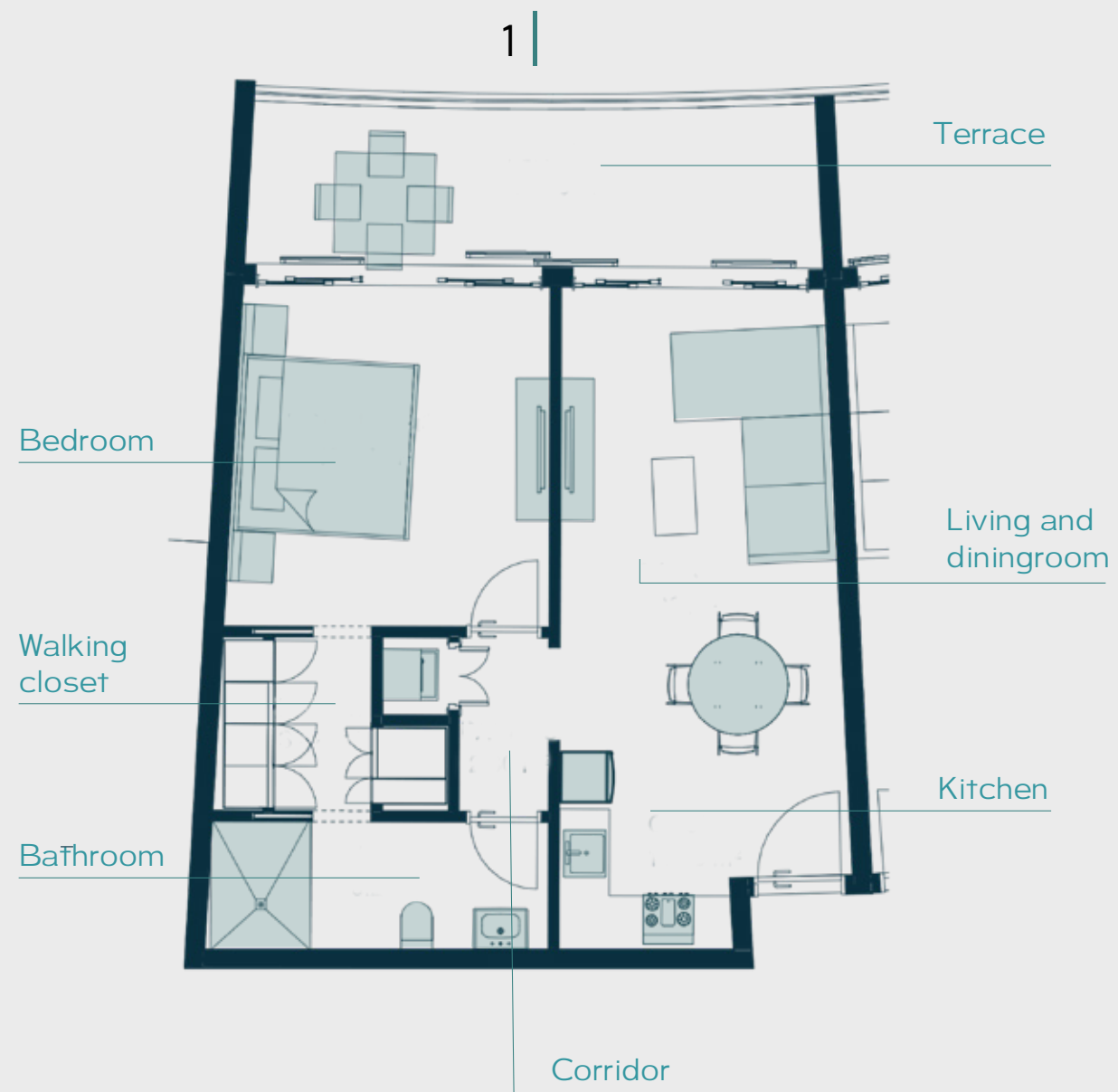
Parking

Tennis

# Apartment

1 | **1 Bedroom**  
Area: 66.37 m<sup>2</sup>  
Common area:  
Terrace: 3.68 m<sup>2</sup>

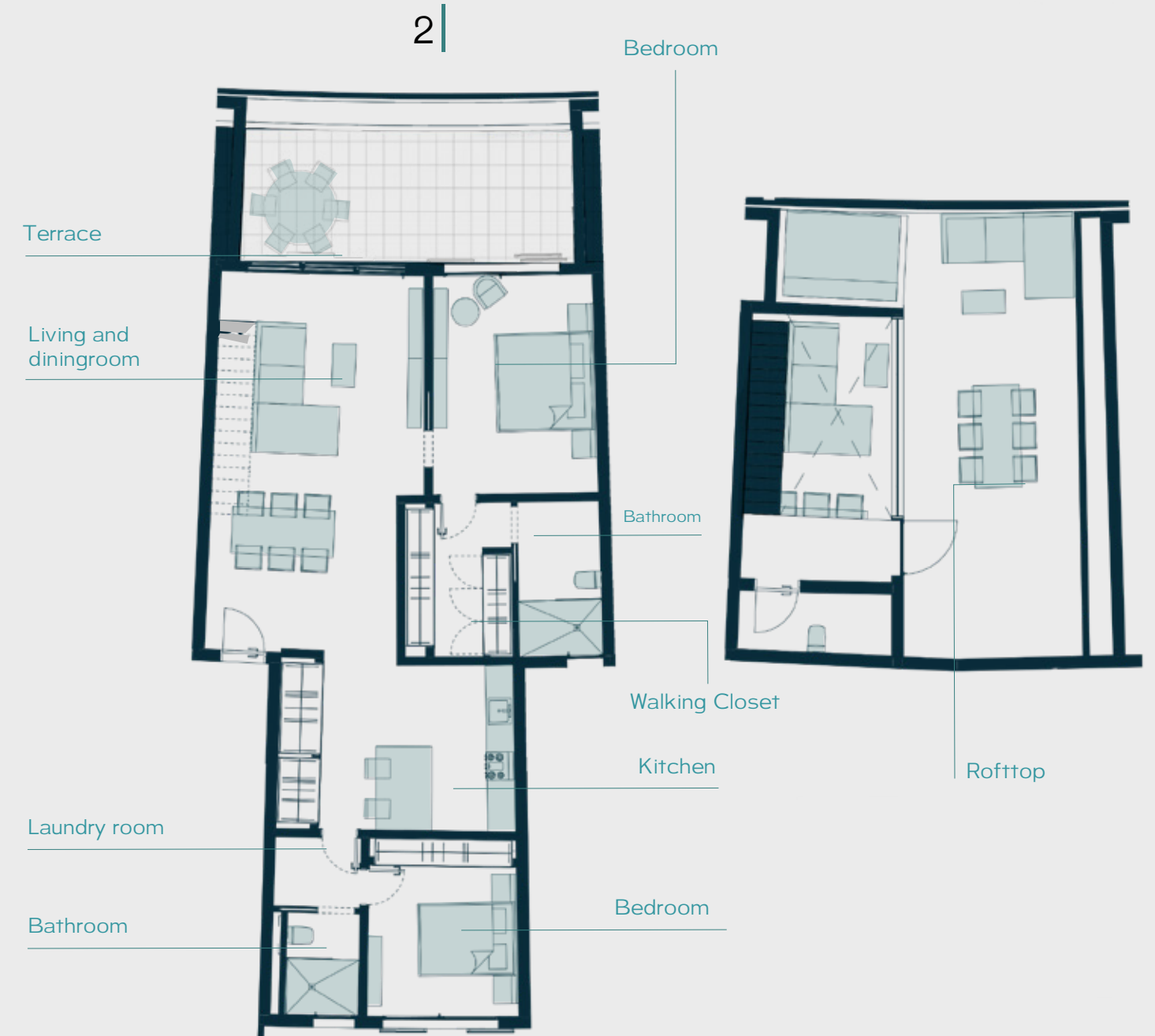
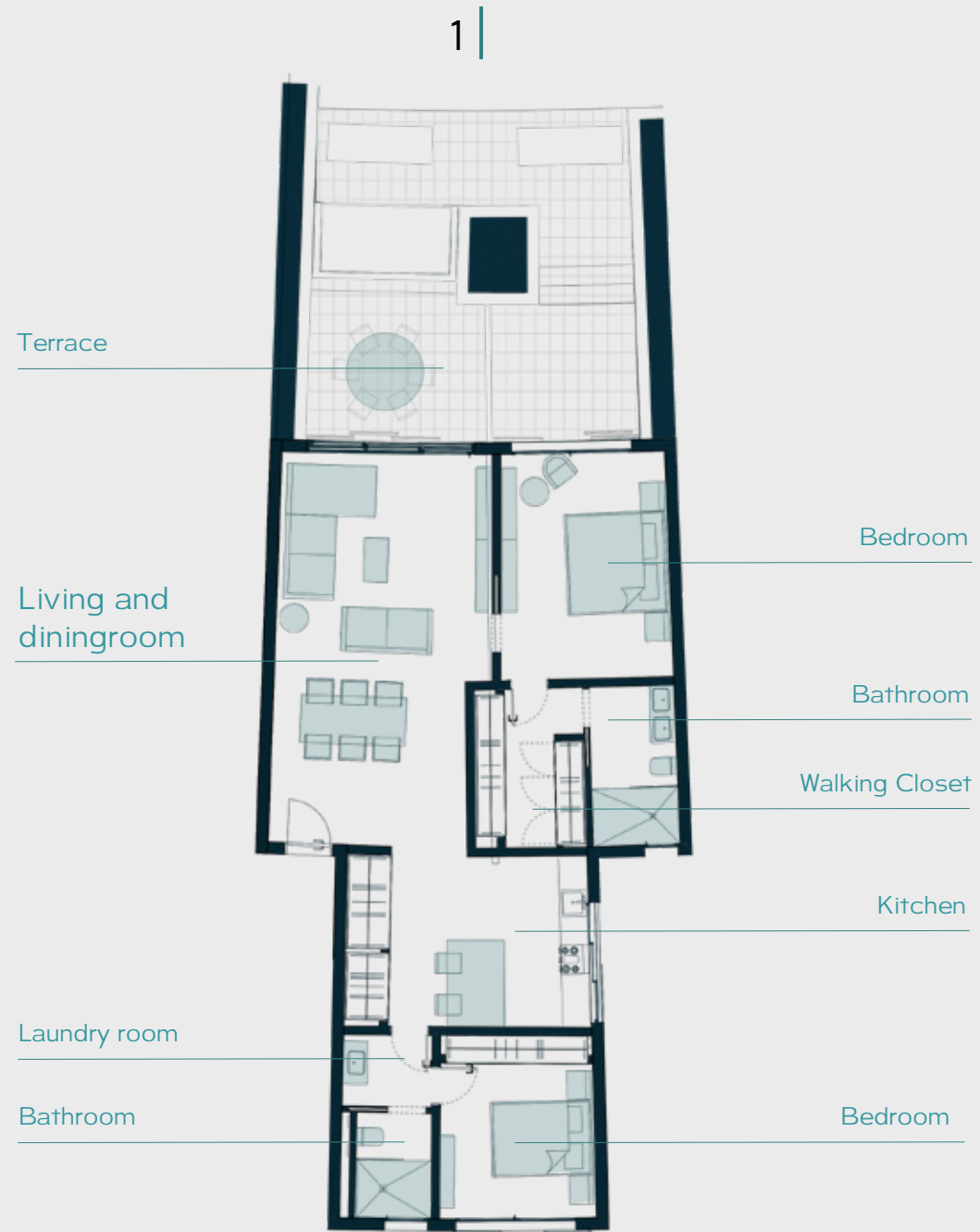
2 | **1 Bedroom**  
Area: 37.05 m<sup>2</sup>  
Common area:  
Terrace: 6.48 m<sup>2</sup>



# Apartment

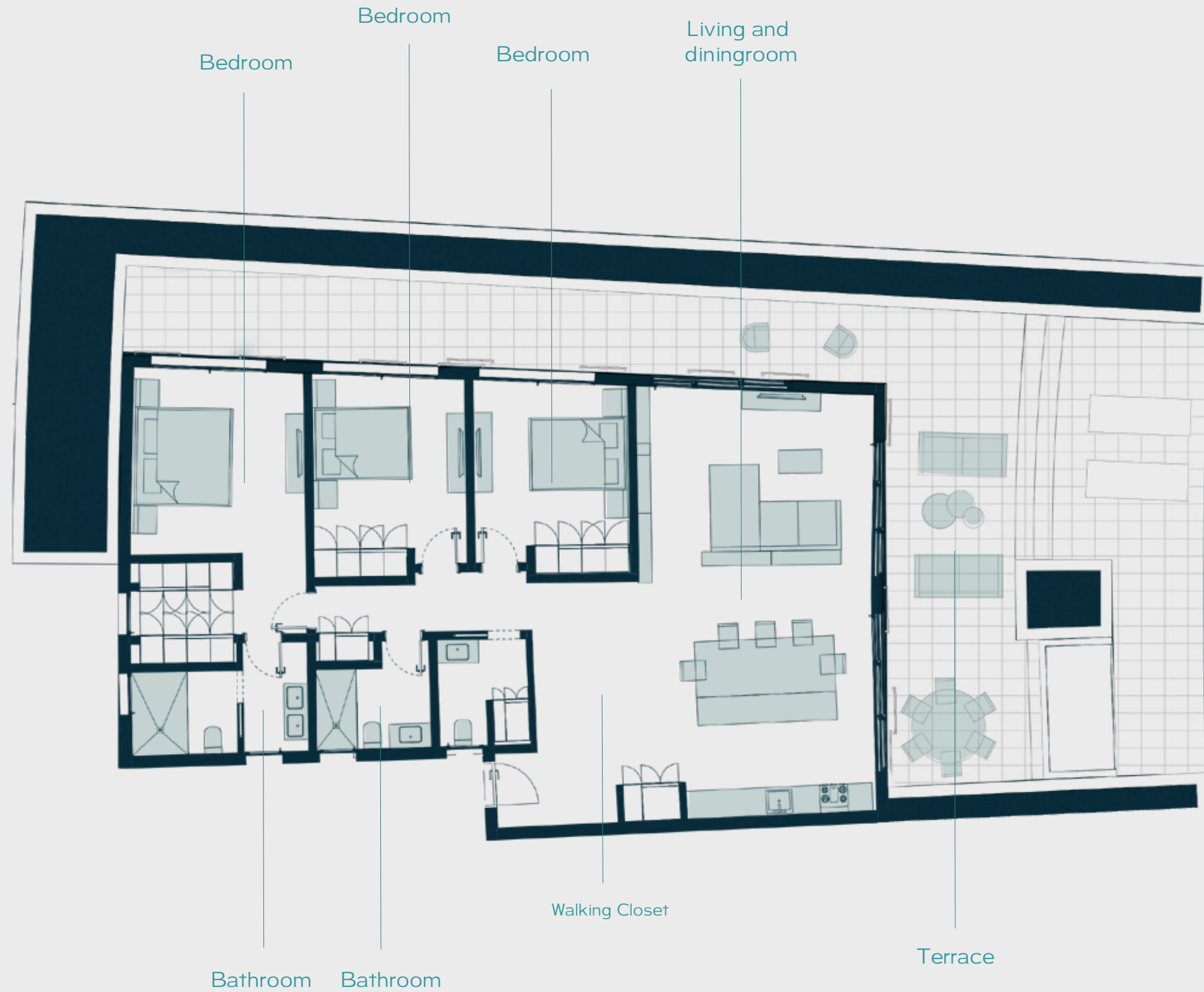
1 | **2 Bedroom**  
Area: 172 m<sup>2</sup>  
Common area:  
Terrace: 56 m<sup>2</sup>

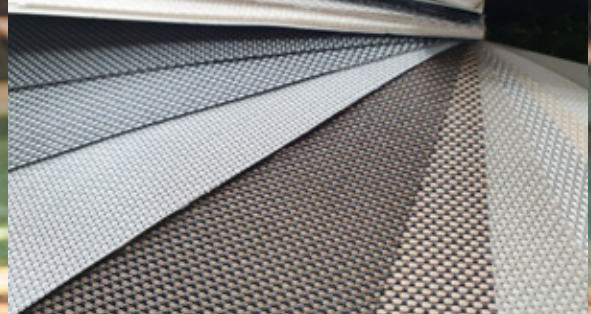
2 | **2 Habitaciones**  
Área: 215 m<sup>2</sup>  
Área común:  
Terraza: 30 m<sup>2</sup>



# Apartment

1 | **3 Bedroom**  
Area: 253 m<sup>2</sup>  
Common area:  
Terrace: 103 m<sup>2</sup>















## Payment Plans

	Downpayment	During construction	On completion
Prompt payment	90%	0%	10%
Prompt payment 50%	50%	30%	20%
Standard	20%	60%	20%

Purchase Date Handover

\*Ask your sales executive about your benefits when choosing early payment\*



**ATLÁNTIDA**  
BY NOVAL PROPERTIES



**NOVAL**  
PROPERTIES

# 18

YEARS OF EXPERIENCE



PREMIUM  
LOCATION &  
HIGHEST QUALITY



FINEST  
FINISHES

SMART  
INVESTMENT



\*EXEMPTION OF 3% TRANSFER TAX  
AND A 1% ANNUAL IPI FOR 15 YEARS

# Project collaborators



**Ceo:**

César Latrilla

**Design Supervisor:**

Antonio Varela

**Conceptual Idea y Project Direction:**

Lucía Gonzalez Suarez

**Architecture:**

José Ortiz

Nelson Medina

Darmy Hidalgo

**Interior Design:**

Norys Gómez





ATLÁNTIDA

BY NOVAL PROPERTIES

