



LARIMAR

CITY & RESORT



In Punta Cana, a few minutes away from the airport and beautiful sandy beaches

enjoy incredible views...



from a unique place



LARIMAR CITY & RESORT, the luxury of living

Enjoy the white sand beaches of our swimming pools from a privileged location. Stroll with views of Punta Cana from the Mediterranean-style boardwalk with shops, restaurants, viewpoints and gardens.

Larimar City & Resort is a complex with all the security you need, a hospital, schools, shopping, sports and all the leisure you can imagine.



MASTERPLAN

The project combines vacation tourism with temporary and permanent residence in a paradisiacal environment. Located on the Verón cliff, it offers wonderful views over the Punta Cana area.

The project is divided into several phases that will be executed in stages maintaining all the necessary services from the beginning. In the first stage, phases 1 and 2 will be carried out.





MASTERPLAN 1º Phase

Note: The expressed surfaces, the sizing of pillars, levels, stair steps, the situation of downspouts, ventilation ducts and windows may experience variations during the work due to the requirements of the execution project, technical, legal or in order to improve the functionality of the houses. The textures and materials, as well as the furniture expressed in this plan are merely indicative and informative. Some door swing or restroom layout may undergo some variation. The houses are sold unfinished.





AMENITIES



Green areas



Pools and watersports



Sports areas



Wellness, Fitness and Gym



Mall centers



Shopping Village



Restaurants, BBQ and Pubs



Leisure areas









Características

- Closed project
 - Closed parking
 - Intercom.
 - Video surveillance
 - Social area
 - Swimming pool
 - Arbor y BBQ
 - Lockers.
 - Children's play area
-
- Elevators
 - Lobby.
 - Emergency stairs
 - Garbage chute
-
- Alarm pre-installation
 - Electric heater
 - Whole house water system with UV filter for safe drinking water
 - Modular kitchen
 - Air conditioning
 - Precious wood finishes
 - Coral and ceramic floors
 - Glass screen in showers





LARIMAR
CITY & RESORT



LEVEL 1. ACCESS APARTMENTS

Note: The expressed surfaces, the sizing of pillars, levels, stair steps, the situation of downspouts, ventilation ducts and windows may experience variations during the work due to the requirements of the execution project, technical, legal or in order to improve the functionality of the houses. The textures and materials, as well as the furniture expressed in this plan are merely indicative and informative. Some door swing or restroom layout may undergo some variation. The houses are sold unfurnished.



LARIMAR
CITY & RESORT



LEVEL 2. APARTMENTS

Note: The expressed surfaces, the sizing of pillars, levels, stair steps, the situation of downspouts, ventilation ducts and windows may experience variations during the work due to the requirements of the execution project, technical, legal or in order to improve the functionality of the houses. The textures and materials, as well as the furniture expressed in this plan are merely indicative and informative. Some door swing or restroom layout may undergo some variation. The houses are sold unfurnished.





PAYMENT METHODS

Start	Construction	Delivery
90 %	0 %	10 %
50 %	30 %	20 %
20 %	60 %	20 %
20 %	40 %	40 %
20 %	30 %	50 %
20 %	20 %	60 %
0 %	40 %	60 %

* check with your agent for promotions and the benefits of early payments.



TYPE APARTMENTS 101 & 103

Useful surface: 60.76 m²
 Built surface: 71.56 m²
 Terrace: 57.05 m²

Useful Surfaces

Kitchen-dining room	24.31 m ²
Bedroom 1	10.00 m ²
Bedroom 2	13.06 m ²
Bathroom 1	5.43 m ²
Bathroom 2	3.24 m ²
Hallway	3.76 m ²
Laundry room	0.96 m ²
Terrace	57.05 m ²



TYPE APARTEMENTS 102 & 108

Useful surface: 48.27 m²
 Builted surface: 56.18 m²
 Terrace: 28.65 m²

Useful Surfaces

Kitchen-dining room	29.80 m ²
Bedroom	12.76 m ²
Bathroom	4.28 m ²
Laundry room	1.65 m ²
Terrace	28.65 m ²



TYPE APARTEMENTS 104 & 107

Useful surface: 60.76 m²
 Builted surface: 71.56 m²
 Terrace: 66.80 m²

Useful Surfaces

Kitchen-dining room	24.31 m ²
Bedroom 1	10.00 m ²
Bedroom 2	13.06 m ²
Bathroom 1	5.43 m ²
Bathroom 2	3.24 m ²
Hallway	3.76 m ²
Laundry room	0.96 m ²
Terrace	66.80 m ²



TYPE APARTEMENTS 105 & 106

Useful surface: 44.65 m²
 Buiilded surface: 52.29 m²
 Terrace: 23.80 m²

Useful Surfaces

Kitchen-dining room	25.54 m ²
Bedroom	13.08 m ²
Bathroom	4.73 m ²
Laundry room	1.30 m ²
Terrace	23.80 m ²

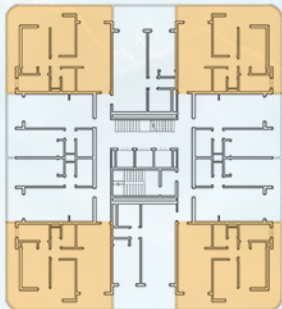


TYPE APARTEMENTS
201, 205, 207 & 210

Useful surface: 60.76 m²
 Builted surface: 71.56 m²
 Terrace: 23.52 m²

Useful Surfaces

Kitchen-dining room	24.31 m ²
Bedroom 1	10.00 m ²
Bedroom 2	13.06 m ²
Bathroom 1	5.43 m ²
Bathroom 2	3.24 m ²
Hallway	3.76 m ²
Laundry room	0.96 m ²
Terrace	23.52 m ²

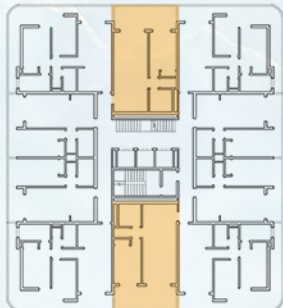


TYPE APARTEMENTS 202 & 206

Useful surface: 48.27 m²
 Built surface: 56.18 m²
 Terrace: 19.56 m²

Useful Surfaces

Kitchen-dining room	29.80 m ²
Bedroom	12.76 m ²
Bathroom	5.30 m ²
Laundry room	1.65 m ²
Terrace	19.56 m ²

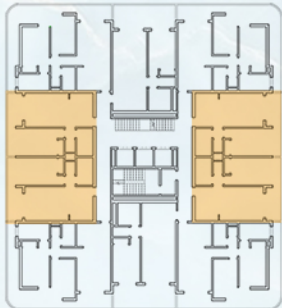


TYPE APARTEMENTS
203, 204, 208 & 209

Useful surface: 44.65 m²
 Builted surface: 52.29 m²
 Terrace: 7.89 m²

Useful Surfaces

Kitchen-dining room	25.54 m ²
Bedroom	13.08 m ²
Bathroom	4.73 m ²
Laundry room	1.30 m ²
Terrace	7.89 m ²

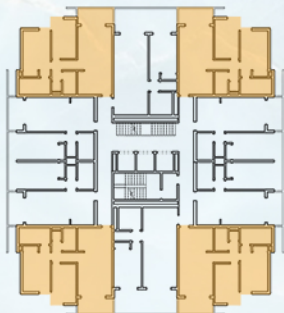


TYPE APARTEMENTS
301, 305, 307 & 310

Useful surface: 60.76 m²
 Built surface: 71.56 m²
 Terrace: 5.58 m²

Useful Surfaces

Kitchen-dining room	24.31 m ²
Bedroom 1	10.00 m ²
Bedroom 2	13.06 m ²
Bathroom 1	5.43 m ²
Bathroom 2	3.24 m ²
Hallway	3.76 m ²
Laundry room	0.96 m ²
Terrace	5.58 m ²





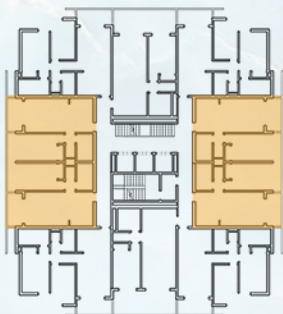
LARIMAR
CITY & RESORT

TYPE APARTEMENTS
303, 304, 308 & 309

Useful surface: 44.65 m²
Buildded surface: 52.29 m²
Terrace: 5.28 m²

Useful Surfaces

Kitchen-dining room	25.54 m ²
Bedroom	13.08 m ²
Bathroom	4.73 m ²
Laundry room	1.30 m ²
Terrace	5.28 m ²



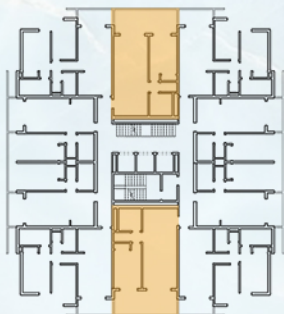
Note: The expressed surfaces, the sizing of pillars, levels, stair steps, the situation of downspouts, ventilation ducts and windows may experience variations during the work due to the requirements of the execution project, technical, legal or in order to improve the functionality of the houses. The textures and materials, as well as the furniture expressed in this plan are merely indicative and informative. Some door swing or restroom layout may undergo some variation. The houses are sold unfurnished.

TYPE APARTEMENTS 302 & 306

Useful surface: 48.27 m²
 Built surface: 56.18 m²
 Terrace: 15.45 m²

Useful Surfaces

Kitchen-dining room	29.80 m ²
Bedroom	12.76 m ²
Bathroom	5.30 m ²
Laundry room	1.65 m ²
Terrace	15.45 m ²







LARIMAR
CITY & RESORT

 CLERHP